



# COMPANY PROFILE

## 2025

## WELCOME MESSAGE

---

# SAWUBONA



### **CEO: Sandile Msibi**

---

Welcome to SNPM Projects. We are committed to excellence, innovation, and building lasting relationships with our clients and partners. Our mission is to deliver high-quality solutions that drive growth and create value. Thank you for your trust and support—we look forward to achieving success together.

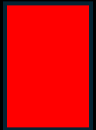
**WELCOME TO SNPM PROJECTS!**



SAWUBONA

# ABOUT

SNPM PROJECTS



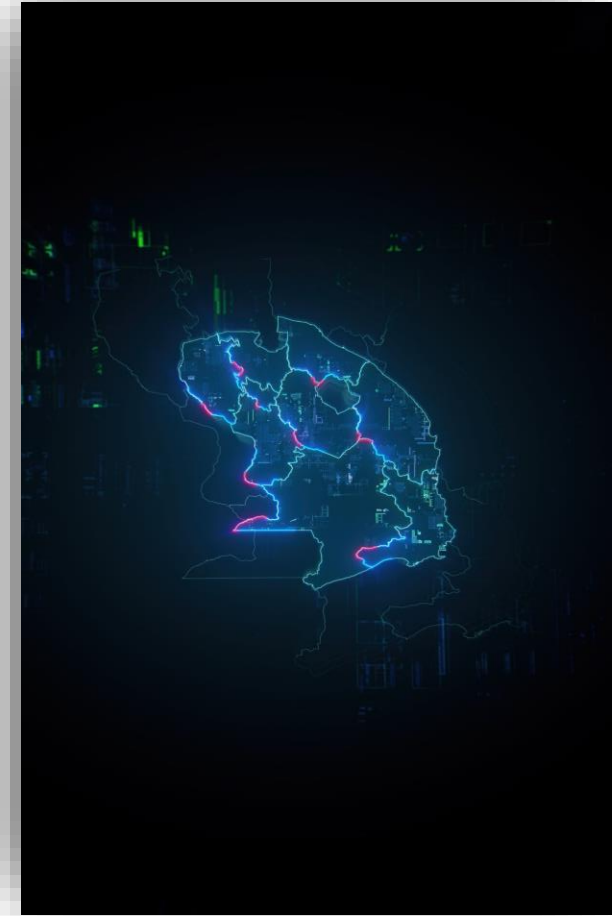
ABOUT US

INNOVATION | EXCELLENCE | GROWTH

# ~~ALL~~ SNPM PROJECTS

## 01. At **SNPM** **PROJECTS,**

we prioritize **strategic partnerships** and continuous improvement, leveraging industry expertise and cutting-edge technology to deliver results that exceed expectations. Our goal is to not only contribute to the success of our clients but also foster long-term business relationships built on trust and reliability. SNPM Projects is a dynamic and innovative company dedicated to delivering high-quality solutions across multiple industries. With a strong commitment to excellence, efficiency, and client satisfaction. Our mission is to drive sustainable growth by providing tailored solutions that meet the evolving needs of our clients. We believe in **innovation, integrity, and impact**, ensuring that every project we undertake is executed with precision and professionalism.



## MANAGEMENT SYSTEM :

Our management system is built on efficiency, transparency, and innovation to ensure seamless project execution. We integrate industry best practices, advanced technology, and strict compliance measures to optimize resource allocation, mitigate risks, and maintain quality standards. With a focus on strategic planning and continuous improvement, we streamline workflows to enhance productivity, deliver projects on time, and exceed client expectations

## HEALTH & SAFETY :

Health and safety are fundamental to our operations. We are committed to maintaining a safe and compliant work environment by implementing strict safety protocols, risk assessments, and industry best practices. Our team undergoes regular training to ensure adherence to occupational health and safety standards, minimizing hazards and promoting a culture of safety. Through proactive measures and continuous improvement, we prioritize the well-being of our employees, clients, and stakeholders while ensuring compliance with all relevant regulations.

## WHAT GUIDES US

## OBJECTIVES

- Provide high-quality services that meet and exceed client expectations through innovation and efficiency.
- Maintain strict health, safety, and environmental standards in all operations.
- Expand business operations while ensuring long-term profitability and sustainability.
- Build strong, lasting relationships through transparency, reliability, and superior service delivery.
- Utilize advanced management systems to improve efficiency, reduce waste, and maximize productivity.
- Collaborate with key stakeholders to strengthen industry presence and business opportunities.
- Adopt cutting-edge solutions to improve project execution and operational performance.
- Provide continuous training and development to enhance skills, safety awareness, and overall productivity.



# MISSION & VALUES 5

Our mission is to deliver innovative, high-quality solutions that drive sustainable growth, exceed client expectations, and foster long-term business success through integrity, efficiency, and strategic partnerships.

## CORE VALUES

- Integrity
- Excellence
- Innovation
- Safety Customer Focus
- Sustainability
- Collaboration

# SNPM PROJECTS

## SERVICES



OUR SERVICES

INNOVATION | EXCELLENCE | GROWTH



A black and white photograph of several high-voltage power line towers stretching into the distance under a cloudy sky. The towers are silhouetted against the sky, creating a sense of depth and scale.

“BUILDING SUCCESS  
THROUGH **INNOVATION**,  
**INTERGRITY**, and  
**EXCELLENCE**.”

## OUR SERVICES

SNPM Projects offers a wide range of professional services designed to deliver high-quality solutions tailored to our clients' needs. Our expertise spans across various industries, ensuring efficiency, innovation, and excellence in every project.

A solid red square graphic located in the bottom left corner of the slide.

OUR **SERVICES**

# CONSTRUCTION

**CONSTRUCTION**

## GENERAL CONSTRUCTION

**SNPM Projects** is a dynamic company specializing in infrastructure development and construction services. We are committed to delivering high-quality, cost-effective solutions that meet industry standards and client expectations. Our expertise spans residential, commercial, and industrial projects, ensuring durability, functionality, and sustainability in every build.

We have extensive experience in all areas of Social Housing including:

- Peoples Housing Projects;
- Project Based (RDP Type) Housing
- Essential Services
- Community Residential Units (CRU's)

### **BUILDING**

We have had a lot of business in the building arena with projects ranging from housing to schools,

Some of the building projects we have completed include:

- Schools – Various Employers;
- Upgrades – KZN Bar into a gym;

**INNOVATION | EXCELLENCE | GROWTH**



# BUILDING THE **FUTURE**, ONE SOLID FOUNDATION AT A TIME.



On a limited and selective basis we develop properties for our own account as well as for a client's account. This incorporates all of the aspects as outlined under Turnkey Design and Construct but includes the procurement of project finance, both development and term finance.

CONSTRUCTION

INNOVATION | EXCELLENCE | GROWTH

## CIVIL WORKS

**SNPM's** Civils division prides itself on delivering high quality multi-disciplinary engineering and construction projects that are on time and within budget. Our commitment to safety, quality and the environment is paramount. A dynamic and flexible management team is equipped with resources to provide theoretical and practical engineering solutions to a range of civil engineering contracting challenges as and when they occur. This team, supported by efficient operational administration and financial systems, together with a committed focus on customer satisfaction forms the key to our Civils division's success.



# 02.

CIVIL

INNOVATION | EXCELLENCE | GROWTH



## ELECTRICAL

**SNPM Projects** provides professional electrical solutions for residential, commercial, and industrial developments. Our team ensures safe, efficient, and compliant electrical installations, maintenance, and upgrades. We specialize in power distribution, wiring, lighting systems, backup power solutions, and smart energy integrations, delivering reliable and sustainable electrical infrastructure for every project.

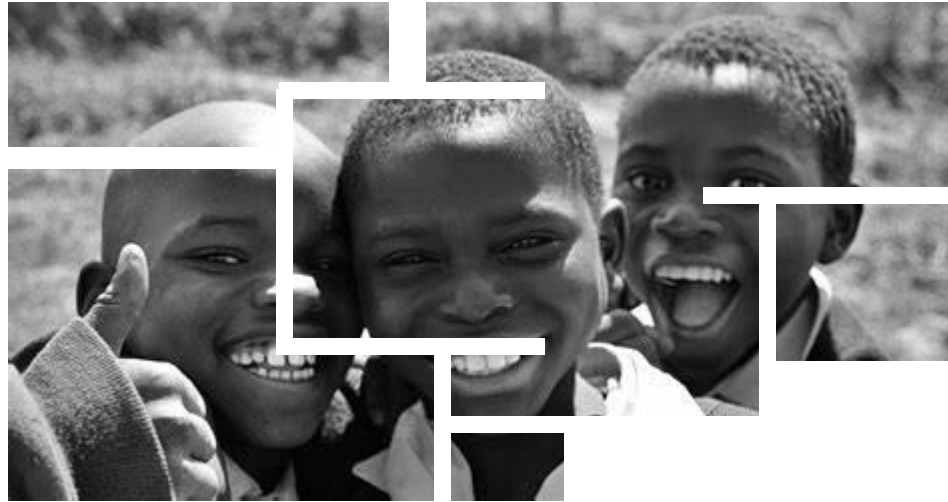
**SNPM** offers full electrical scope of works. This newly formed division serves both Motheo and external clients

- Electrical installations and maintenance
- Installation and maintenance of power generators
- Construction and maintenance of medium Voltage and low voltage networks
- Maintenance of direct current systems



ELECTRICAL





# ABOUT OUR CSR

At SNPM Projects, we are committed to conducting business with integrity, sustainability, and community impact at the forefront of our operations. Our corporate responsibility initiatives ensure that we contribute positively to the economy, environment, and society while maintaining the highest standards in our projects.

Prioritizing community well-being, we engage with local cultures, safeguard the environment, and contribute positively to areas like B-BBEE, Transformation, Health and Safety, People Development, Diversity, Socioeconomic Development, and Ethical Governance. SNPM Projects is a Level 1 B-BBEE contributor.



# OUR CLIENTS & ACCREDITATIONS





# **THANK YOU**

As we wrap up our company profile, we want to express our heartfelt thanks to each of you. Your interest in our journey and services means the world. We look forward to potential collaborations and appreciate your support.



☎ 078 466 3369

✉ [SNMPROJECTS@GMAIL.COM](mailto:SNMPROJECTS@GMAIL.COM)